



A Recipe for... the BUBBLELYTIC protocell



1 ×



1 ×



2 ×



grows baby protocells on its surface

that



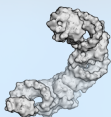
clips off so they can spread far and wide.



fill these with food before their journey.

The bubblelytic does not divide in two to copy itself: instead it sends out many tiny offspring, of which a few may be lucky enough to mature.

What is... a Divider RNA?



RNAs are made up of a strand of building block 'letters'. Some strands of letters can fold up into **3D shapes** that can stick to things. Scientists have found an RNA sequence that can stick to and **disrupt protocell surfaces**. The right shape could pinch a protocell in two.

What is... a clay particle?



Clays form when water acts on **volcanic ash**. Under the microscope, they are **layers of atoms** between which water and molecules can move. Building blocks have been shown to **line up** on them and become linked together to make RNA. Protocells can also grow on these layers.

Find out more:



<https://mrc.io/recipe4life>

